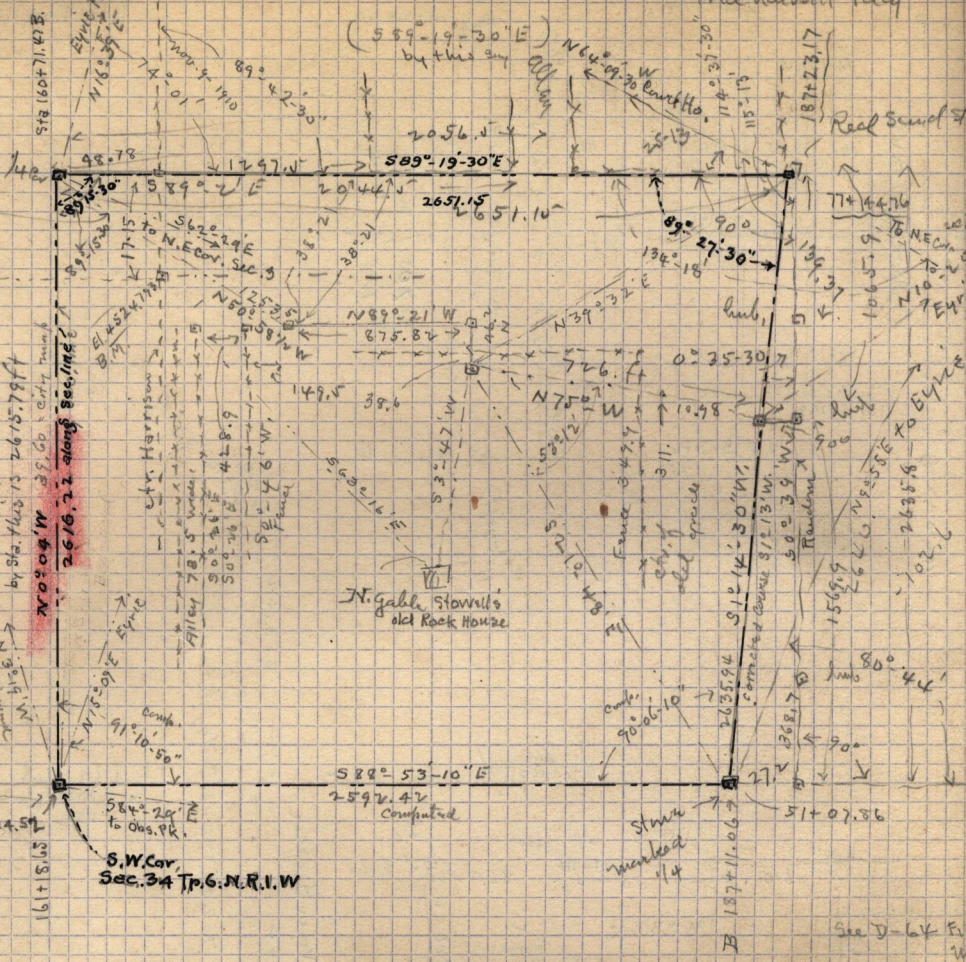


56

See page 61

Sta. 77 + 30.01 A =

Ch. 29th St. 77 + 12.58



133798.15
 N 89° 33' 30" W
 40.92 ch.
 inclg imp.
 50 + 59.77
 51 + 14.57
 16 + 18.50
 by Sta. this is 2615.79 ft
 30° 04' W 38.60 ch. from
 2616.72 along Sec. line
 N 15° 00' E 51.12
 91° 10' 50"
 54° 24' E
 to Obs. Pt.
 S.W. Cor.
 Sec. 34 Tp. 6. N. R. 1. W
 2720.5 ft
 51 + 07.36

From N. Cor. on S. line
 Sec. 34 - to the S.E. Cor. Sec
 34 = 589° 00' 47" E 2610.28

S.E. Cor. Sec. 34
 = A 51 + 06.96
 B 213 + 71.34